



Government of India
Ministry of Earth Sciences



India Meteorological Department

PRESS RELEASE - 4

Time of issue: 1320 hours IST

Dated: 02-10-2021

Sub: Severe Cyclonic Storm 'Shaheen' over northwest Arabian Sea

Yesterday's Cyclonic Storm "Shaheen" over central parts of north Arabian Sea moved west-northwestwards and intensified into a severe cyclonic storm in the same evening (1730 hours IST of 1st October). Continuing to move further west-northwestwards, it lay centred at 0830 hrs IST of 2nd October, 2021 over northwest Arabian Sea, near latitude 23.9°N and longitude 62.1°E, about 740 km west-northwest of Devbhoomi Dwarka (Gujarat), 210 km east-southeast of Chabahar Port (Iran) and 370 km east-northeast of Muscat (Oman).

It is very likely to move west-northwestwards skirting Makran coast during next 24 hours. Thereafter, it is likely to re-curve west-southwestwards, move towards Oman coast across Gulf of Oman and weaken gradually. It is very likely to cross Oman coast between Longitude 56°E & 58°E, around 57°E during early hours (0000-0400 hours IST) of 4th October 2021, as a Cyclonic Storm with maximum sustained wind speed of 80 – 90 kmph gusting to 100 kmph.

The system is moving away from the Indian coast and no adverse weather of any kind is expected over India.

Forecast track and intensity are given in the following table:

Date/Time(IST)	Position (Lat. °N/ long. °E)	Maximum sustained surface wind speed (Kmph)	Category of cyclonic disturbance
02.10.21/0830	23.9/62.1	110-120 gusting to 130	Severe Cyclonic Storm
02.10.21/1130	24.1/61.7	110-120 gusting to 130	Severe Cyclonic Storm
02.10.21/1730	24.3/61.0	110-120 gusting to 130	Severe Cyclonic Storm
02.10.21/2330	24.4/60.3	105-115 gusting to 125	Severe Cyclonic Storm
03.10.21/0530	24.4/59.6	100-110 gusting to 120	Severe Cyclonic Storm
03.10.21/1730	24.2/58.3	90-100 gusting to 110	Severe Cyclonic Storm
04.10.21/0530	23.9/57.0	70-80 gusting to 90	Cyclonic Storm
04.10.21/1730	23.5/55.8	40-50 gusting to 60	Depression

Warnings:

(i) Wind warning

- Gale wind speed reaching 110-120 kmph gusting to 130 kmph likely to prevail over northwest Arabian Sea adjoining Makran coast during next 12 hours. It would gradually decrease becoming 100 - 110 Kmph gusting to 120 Kmph over northwest Arabian Sea and adjoining Makran coast from early hours of 03rd Oct. till late evening and further reduce becoming 70-80 kmph gusting to 90 kmph over northwest Arabian Sea and adjoining Gulf of Oman from the early hours of 04th Oct. and further reduce thereafter.
- Squally wind speed reaching 40-50 kmph gusting to 60 kmph likely to prevail over northeast Arabian Sea during next 06 hours. It would gradually reduce thereafter.

Contact: Cyclone Warning Division, Office of the Director General of Meteorology,
India Meteorological Department, Ministry of Earth Sciences.

Phone: (91) 11-24652484, FAX: (91) 11-24643128, 24623220, E-mail: cwdhq2008@gmail.com, Website: rsmcnewdelhi.imd.gov.in

Spatial rainfall distribution: Isolated: <25%, A few: 26-50%, Many: 51-75%, Most: 76-100%

Rainfall amount (mm): Heavy rain: 64.5 – 115.5, Very heavy rain: 115.6 – 204.4, Extremely heavy rain: 204.5 or more.

(ii) Sea condition

- Sea condition will be high to very high over northwest Arabian Sea & along and off Makran Coast till evening of 03rd Oct. It would improve gradually becoming high over northwest Arabian Sea & adjoining Gulf of Oman from the night of 3rd October during subsequent 12 hours.

(iii) Fishermen Warning

- Fishermen are advised not to venture into northwest Arabian Sea, Gulf of Oman, along & off Makran and Oman coasts and till 4th October morning.
- Fishermen are also advised not to venture into northeast Arabian Sea during next 06 hours.

(iv) EXPECTED IMPACT & ACTION SUGGESTED

- As the system is moving away from the Indian coast, no further impact is likely over the India
- However, Fishermen as well as Mariners are advised to avoid the Sea areas specified above.

Contact: Cyclone Warning Division, Office of the Director General of Meteorology,
India Meteorological Department, Ministry of Earth Sciences.

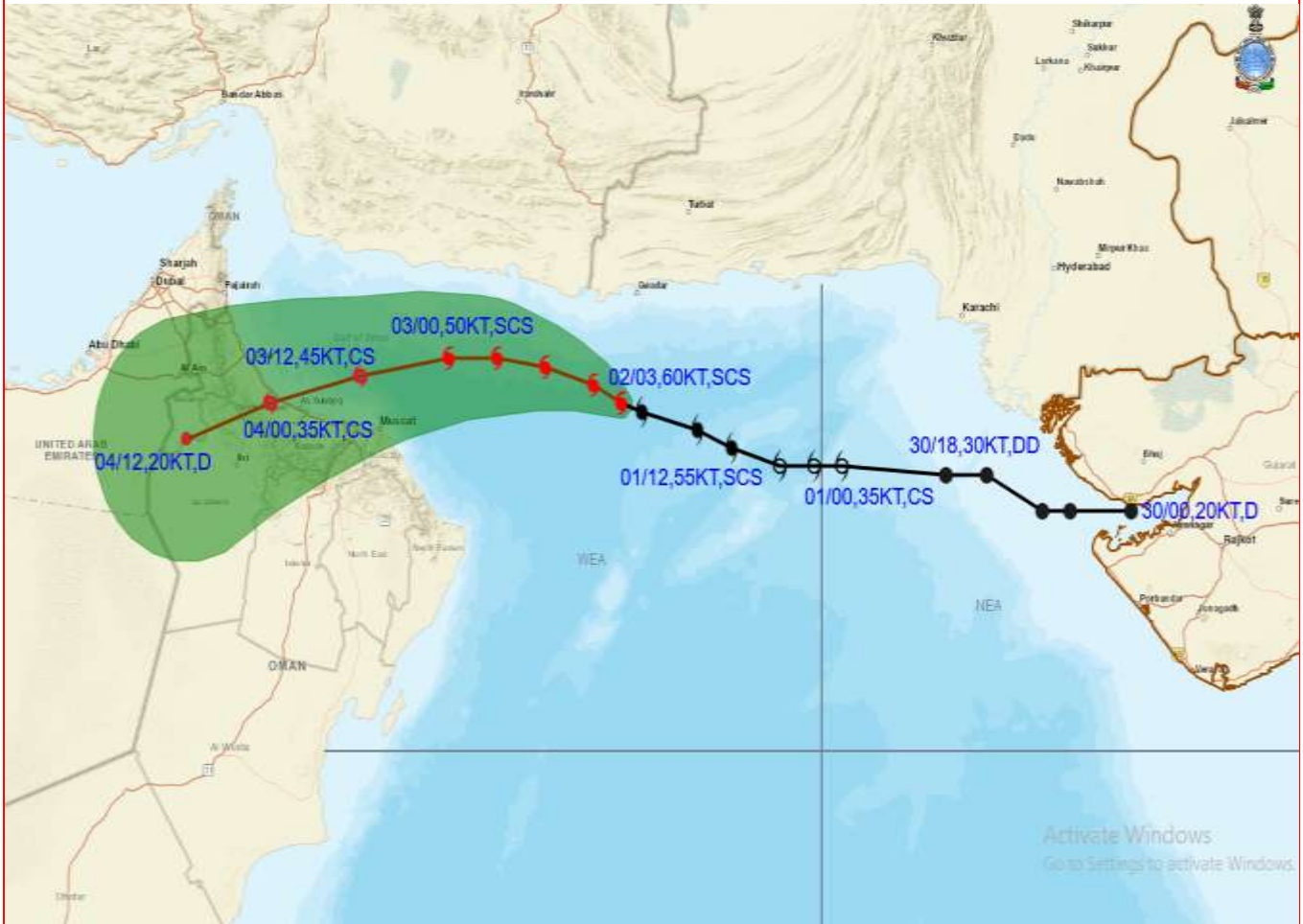
Phone: (91) 11-24652484, FAX: (91) 11-24643128, 24623220, E-mail: cwdhq2008@gmail.com, Website: rsmcnewdelhi.imd.gov.in

Spatial rainfall distribution: Isolated: <25%, A few: 26-50%, Many: 51-75%, Most: 76-100%

Rainfall amount (mm): Heavy rain: 64.5 – 115.5, Very heavy rain: 115.6 – 204.4, Extremely heavy rain: 204.5 or more.



OBSERVED AND FORECAST TRACK ALONGWITH CONE OF UNCERTAINTY OF SEVERE CYCLONIC STORM "SHAHEEN" OVER NORTHWEST ARABIAN SEA BASED ON 0300 UTC OF 2ND OCTOBER, 2021



DATE/TIME IN UTC
IST=UTC + 0530
L: LOW PRESSURE AREA
WML: WELL MARKED LOW PRESSURE AREA
D: DEPRESSION (17-27 KT)
DD: DEEP DEPRESSION (28-33 KT)
CS: CYCLONIC STORM (34-47 KT)
VSCS: VERY SEVERE CYCLONIC STORM (64-89 KT)
ESCS: EXTREMELY SEVERE CYCLONIC STORM (90-119 KT)
SuCS: SUPER CYCLONIC STORM (\geq 120 KT)

● LESS THAN 34 KT
○ 34-47 KT
○ \geq 48 KT
— OBSERVED TRACK
— FORECAST TRACK
▲ CONE OF UNCERTAINTY

Contact: Cyclone Warning Division, Office of the Director General of Meteorology,
India Meteorological Department, Ministry of Earth Sciences.

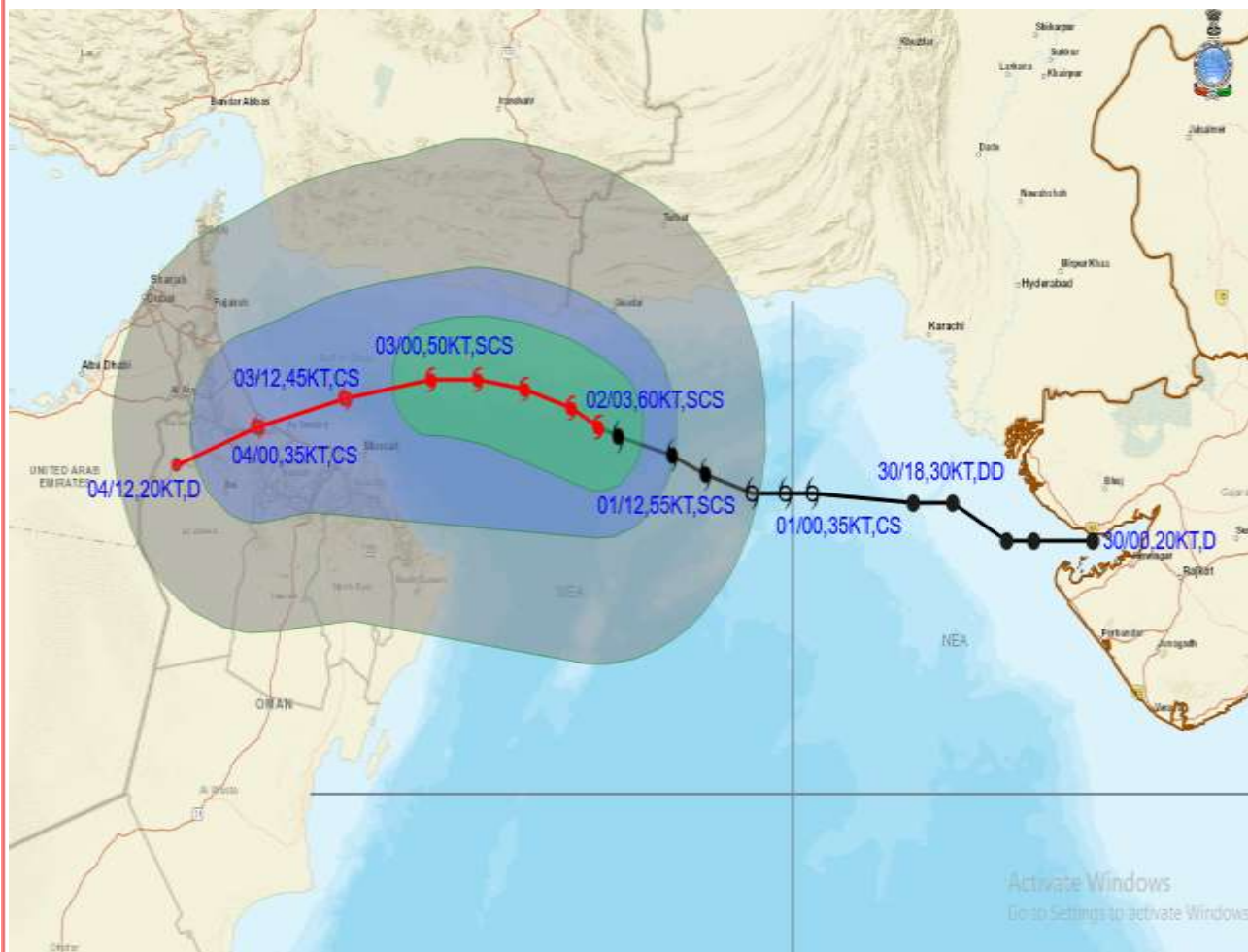
Phone: (91) 11-24652484, FAX: (91) 11-24643128, 24623220, E-mail: cwdhq2008@gmail.com, Website: rsmcnewdelhi.imd.gov.in

Spatial rainfall distribution: Isolated: <25%, A few: 26-50%, Many: 51-75%, Most: 76-100%

Rainfall amount (mm): Heavy rain: 64.5 – 115.5, Very heavy rain: 115.6 – 204.4, Extremely heavy rain: 204.5 or more.



OBSERVED AND FORECAST TRACK ALONGWITH QUADRANT WIND DISTRIBUTION OF SEVERE CYCLONIC STORM "SHAHEEN" OVER NORTHWEST ARABIAN SEA BASED ON 0300 UTC OF 2ND OCTOBER, 2021



DATE/TIME IN UTC
 IST=UTC + 0530
 L: LOW PRESSURE AREA
 WML: WELL MARKED LOW PRESSURE AREA
 D: DEPRESSION (17-27 KT)
 DD: DEEP DEPRESSION (28-33 KT)
 CS: CYCLONIC STORM (34-47 KT)
 SCS: SEVERE CYCLONIC STORM (48-63KT)
 VSCS: VERY SEVERE CYCLONIC STORM (64-89 KT)
 ESCS: EXTREMELY SEVERE CYCLONIC STORM (90-119 KT)
 SuCS: SUPER CYCLONIC STORM (≥ 120 KT)

● LESS THAN 34 KT
 ○ 34.47 KT
 ● ≥ 48 KT
 — OBSERVED TRACK
 — FORECAST TRACK
 ▲ CONE OF UNCERTAINTY
 AREA OF MAXIMUM SUSTAINED WIND SPEED:
 ■ 28-33 KT (52-61 KMPH)
 ■ 34-49 KT (62-91 KMPH)
 ■ 50-63 KT (92-117 KMPH)
 ■ ≥ 64 KT (≥118 KMPH)

IMPACT OVER THE SEA

MSW (knot/kmph)	Impact	Action
28-33 (52-61)	Very rough seas	Total suspension of fishing operations
34-49 (62-91)	High to very high seas	Total suspension of fishing operations
50-63 (92-117)	Very high seas	Total suspension of fishing operations
≥ 64 (≥118)	Phenomenal	Total suspension of fishing operations

Contact: Cyclone Warning Division, Office of the Director General of Meteorology, India Meteorological Department, Ministry of Earth Sciences.

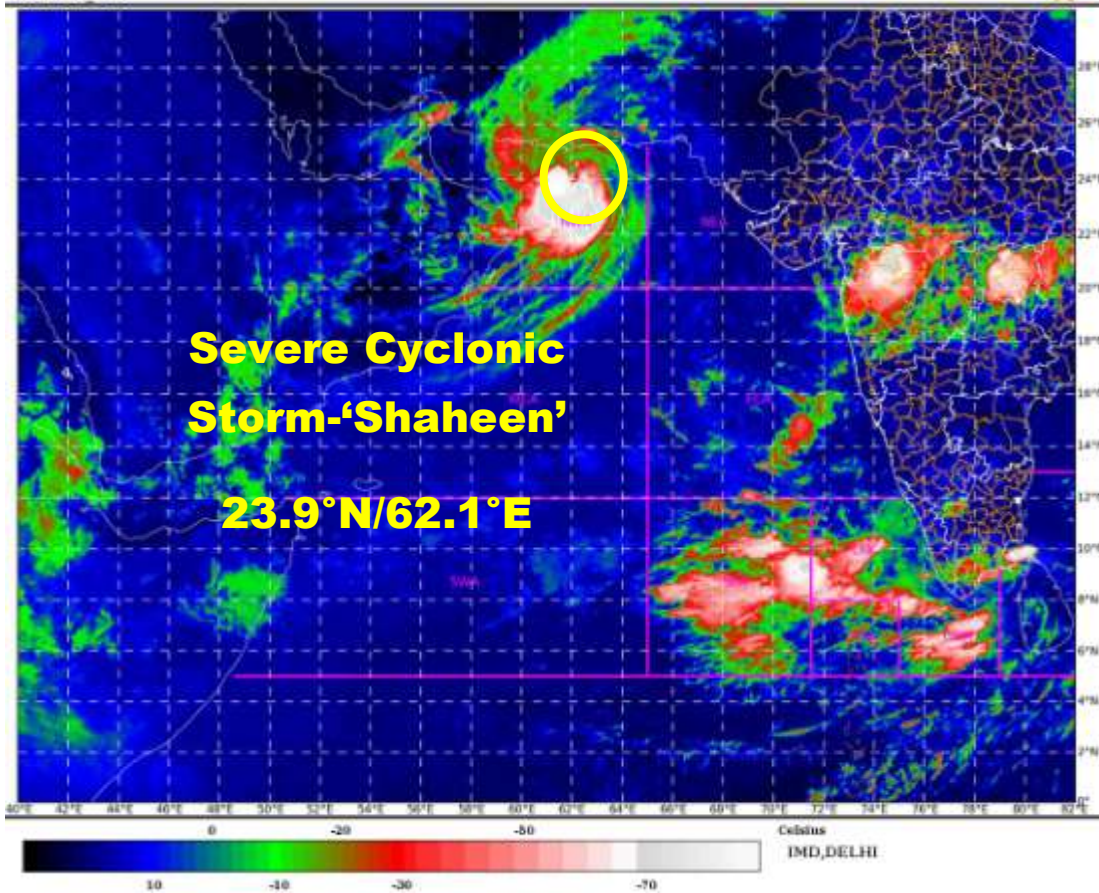
Phone: (91) 11-24652484, FAX: (91) 11-24643128, 24623220, E-mail: cwdhq2008@gmail.com, Website: rsmcnewdelhi.imd.gov.in

Spatial rainfall distribution: Isolated: <25%, A few: 26-50%, Many: 51-75%, Most: 76-100%

Rainfall amount (mm): Heavy rain: 64.5 – 115.5, Very heavy rain: 115.6 – 204.4, Extremely heavy rain: 204.5 or more.

SAT : INSAT-3D IMG
IMG_TIR1_TEMP 10.8 um
ARABIAN SEA

02-10-2021(0400 to 0426) GMT
02-10-2021(0930 to 0956) IST



Contact: Cyclone Warning Division, Office of the Director General of Meteorology,
India Meteorological Department, Ministry of Earth Sciences.

Phone: (91) 11-24652484, FAX: (91) 11-24643128, 24623220, E-mail:cwdhq2008@gmail.com, Website: rsmcnewdelhi.imd.gov.in

Spatial rainfall distribution: Isolated: <25%, A few: 26-50%, Many: 51-75%, Most: 76-100%

Rainfall amount (mm): Heavy rain: 64.5 – 115.5, Very heavy rain: 115.6 – 204.4, Extremely heavy rain: 204.5 or more.